

# Wake Forest Baptist Medical Center

## Executive Council Bridges Department Siloes



### Heart and Vascular Executive Council

#### Administrative Leaders

- Director of Heart and Vascular Center
- VP of Service Lines
- WFBMC COO
- Director of Business and Outreach Strategy

#### Physician Leaders

- Executive Director of Heart and Vascular Center/Chief of Cardiology
- Chief of Vascular & Endovascular Surgery
- Chief of CT Surgery

#### Key Leaders Outside CV Service Line

- Chair of Internal Medicine
- Chair of Radiology Department
- Chair of IR Department
- Chair of Surgery Department



### New Council Supporting Goals of Service Line Reorganization



Unites multidisciplinary leaders to reduce siloes



Extends decision making beyond CV service line dyad



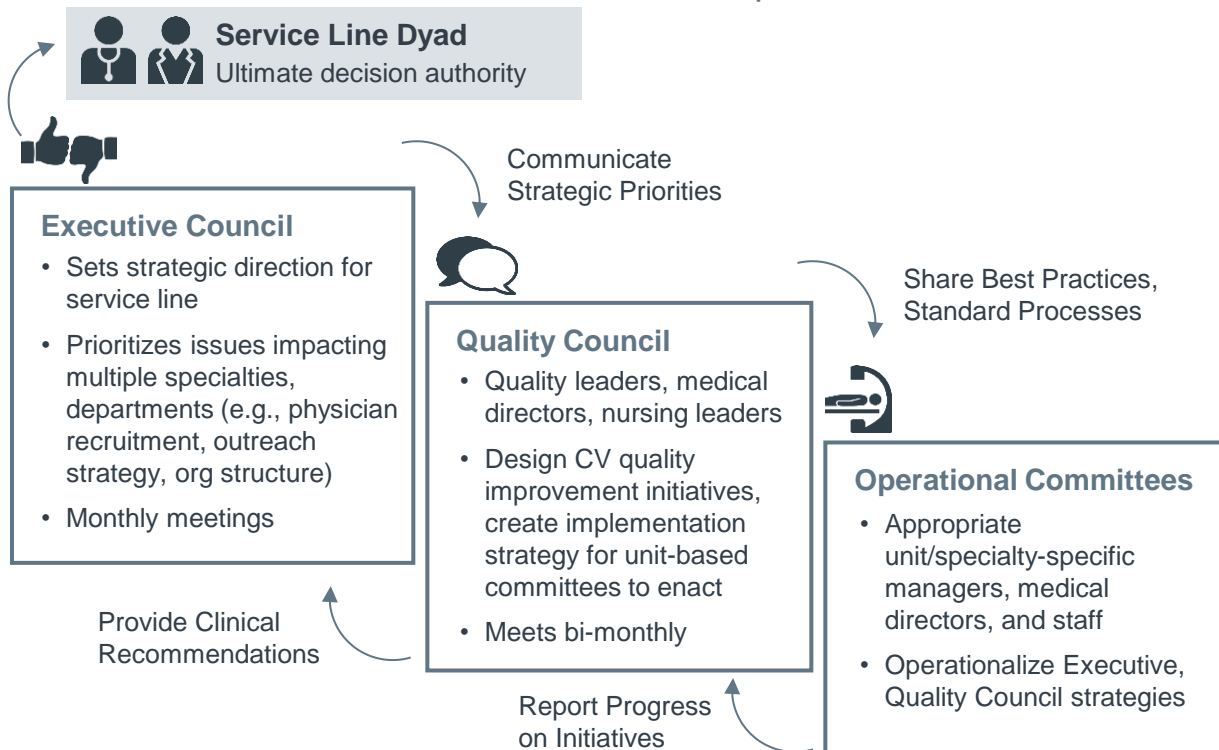
Engages affiliates outside direct service line purview



Enfranchises physicians in service line management

# Defined Relationships Among Key Governing Bodies

## Tiered Governance Structure Delineates Responsibilities and Interactions



# Wake Forest Baptist Medical Center



## Governance Structure in Brief: Wake Forest Baptist Medical Center

- 820-bed academic medical center located in Winston-Salem, NC
- Heart and Vascular Center is transitioning from a department-based structure to new service line model, integrating cardiac, vascular, and cardiothoracic surgery services
- As one of first steps to support reorg, the new CV service line Executive Director of Heart and Vascular assembled a multidisciplinary committee structure to identify and carry out goals of the new service line, and bridge siloes across services
- Chiefs of the Department of Internal Medicine, Radiology, and Surgery are included in the Executive Council despite not being directly within the service line's purview to promote collaboration between the service line and traditional department structure
- Executive Council holds monthly meetings where it addresses global service line issues; unit-level or specialty-specific concerns are delegated to the quality council and ad hoc unit-based operational committees
- New governance structure has increased collaboration, alignment within newly-evolving service line model; has been pivotal in enacting new partnerships with CV physicians in the community