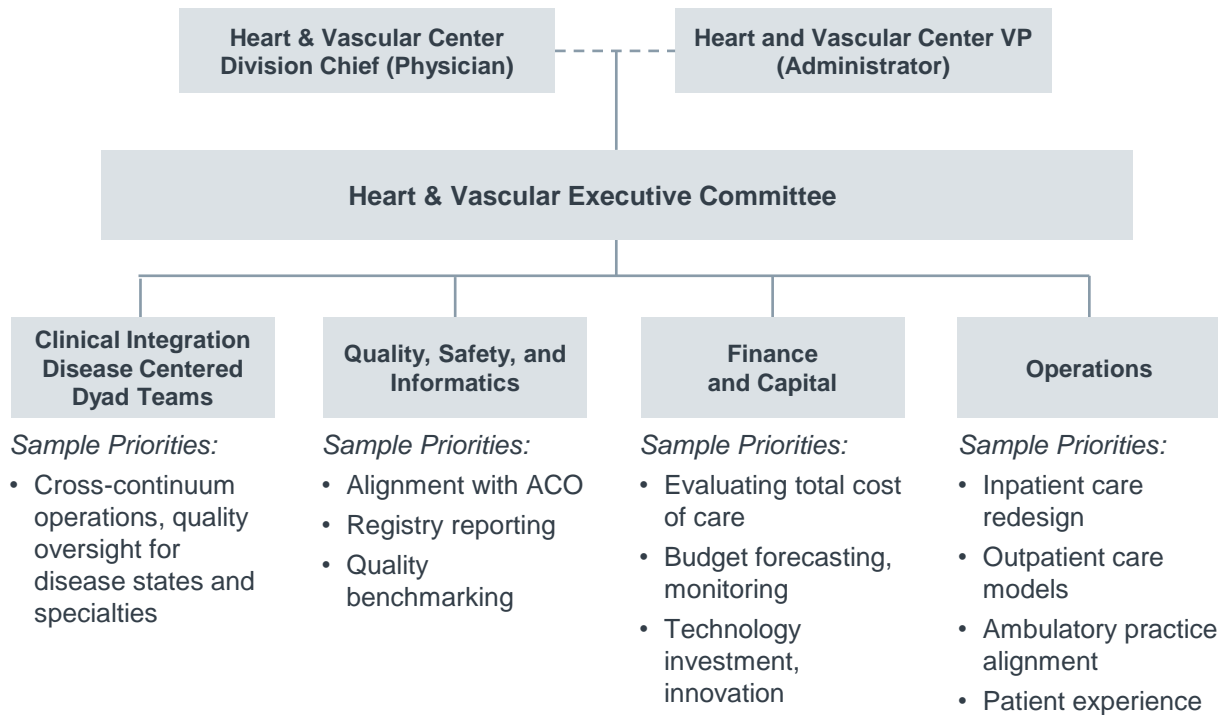


## Traditional Subcommittees Assigned Next-Generation Responsibilities



# Zeroing in on the Executive Committee

## Emphasizing Balance Between Physician and Administrator Influence

### Heart & Vascular Executive Committee

#### Voting Physician Members

- Service line dyad physician leader
- Medical Directors of:
  - Vascular & vein specialists group
  - Thoracic & cardiothoracic surgeons group
  - Heart failure
  - Interventional
  - Imaging/non-invasive
  - Electrophysiology
  - Outreach
- Integrated Care Practice Chief

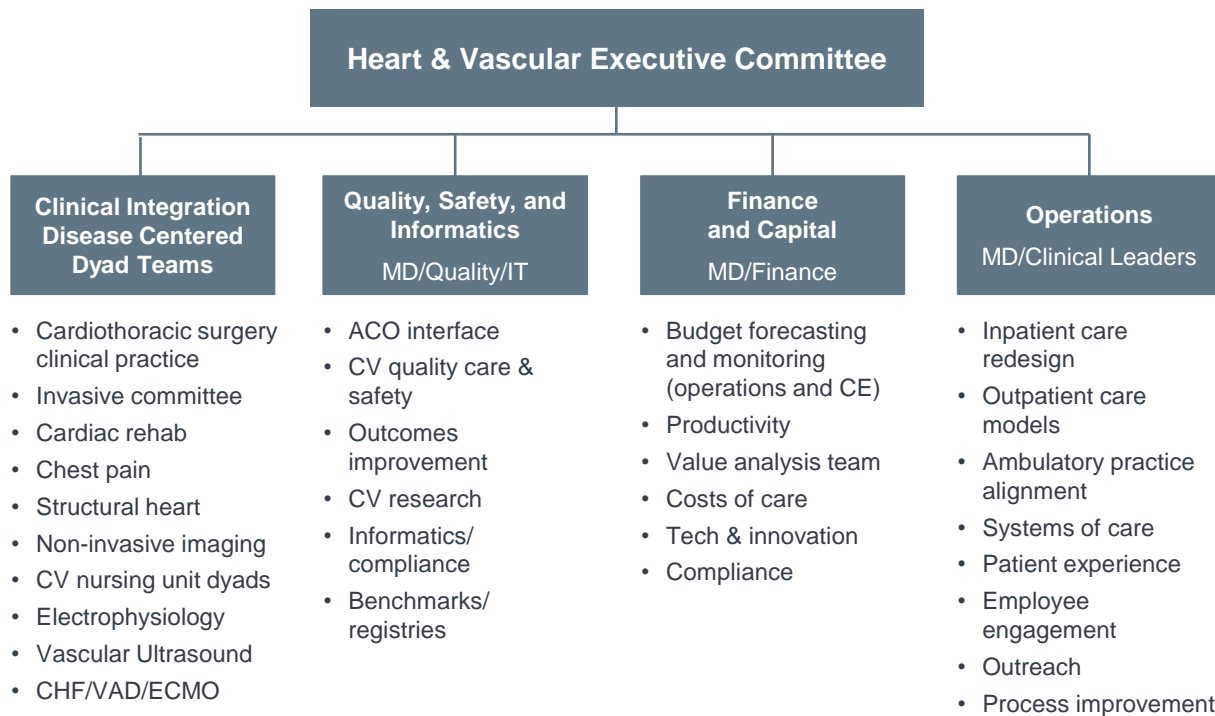
#### Voting Non-Physician Members

- Service line dyad VP
- Cone Health Medical Group director
- Advanced practice practitioner
- Invasive director
- Non-invasive director
- Heart failure/cardiothoracic surgery director
- CV nursing director
- Cardiothoracic OR administrative director

#### Ad Hoc Non-Voting Members

- Alamance Regional Medical Center representative
- Integrated Care Practice Director
- Strategic planning
- Marketing/communications
- Physician liaison
- CVIS
- Finance/business intelligence
- Quality

# Subcommittee Responsibilities





## Governance Structure in Brief: Cone Health

- Six hospital, not-for-profit health care system in Greensboro, NC including the Cone Health Heart and Vascular Center
- Initiated CV service line reorg to further integrate heart and vascular services, expand service line purview beyond their acute care enterprise, and unite three CV physician groups under one umbrella of the service line
- As part of reorg, redesigned hospital-centric governance structure to incorporate all entities under the new service line model, assign oversight to the service line's new responsibilities under value-based care
- New structure emphasizes cross-continuum integration, multidisciplinary collaboration, physician engagement in strategy, coordination with Cone Health's ACO